



MONTHLY MEMBERSHIP PROGRESS REPORT

Results as of: 12/31/2014

Multiple District 4

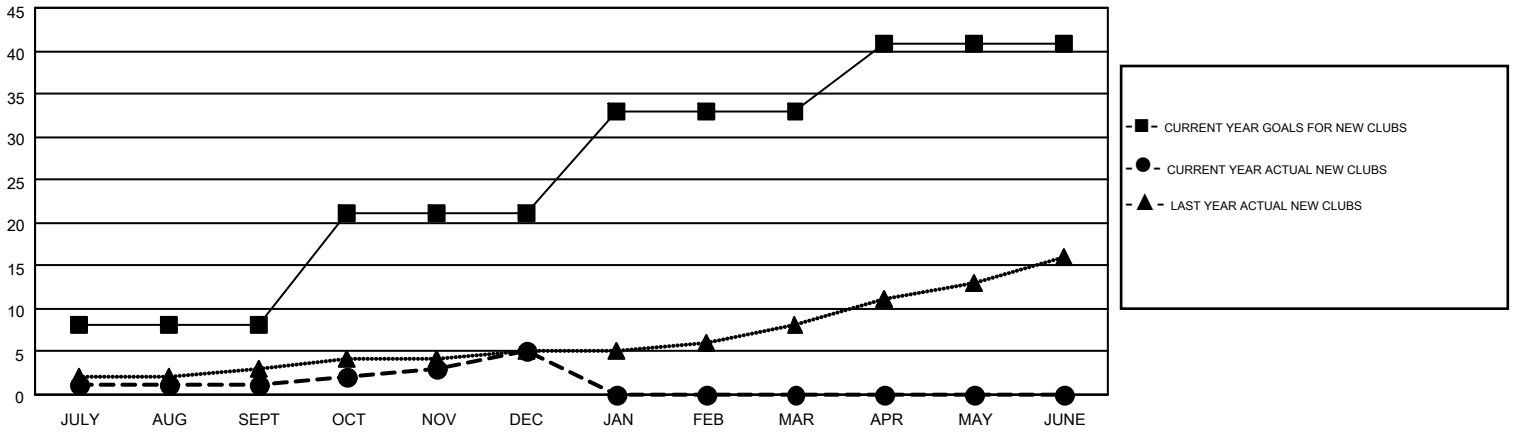
LOCATION: CALIFORNIA

GMT: GARY WONG

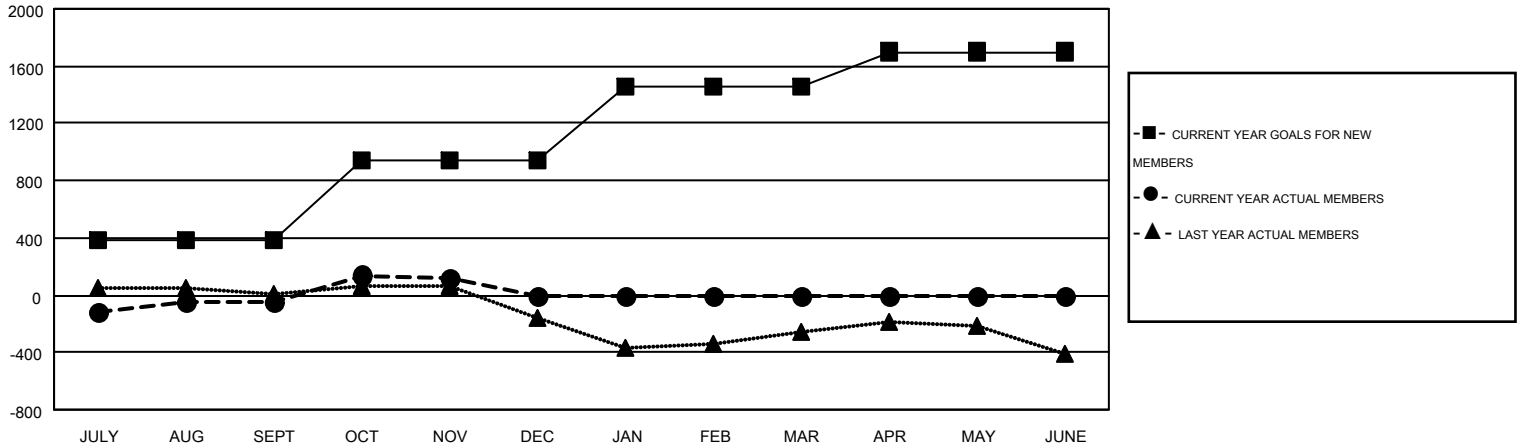
GMT CA 1

| Clubs | | | | | Members | | | | |
|-----------------------|---------------|-----------|---------------|---------------|-----------------------|-----------------|-------------------------------|-----------------|---------------|
| RESULTS FOR 2014-2015 | | | | | RESULTS FOR 2014-2015 | | | | |
| QUARTER | NEW CLUB GOAL | NEW CLUBS | DROPPED CLUBS | NET GAIN/LOSS | QUARTER | NEW MEMBER GOAL | CHARTER AND NEW MEMBERS ADDED | DROPPED MEMBERS | NET GAIN/LOSS |
| JULY/AUG/SEPT | 8 | 1 | 1 | 0 | JULY/AUG/SEPT | 385 | 837 | 886 | -49 |
| OCT/NOV/DEC | 13 | 4 | 10 | -6 | OCT/NOV/DEC | 555 | 778 | 732 | 46 |
| JAN/FEB/MAR | 12 | 0 | 0 | 0 | JAN/FEB/MAR | 514 | 0 | 0 | 0 |
| APR/MAY/JUNE | 8 | 0 | 0 | 0 | APR/MAY/JUNE | 246 | 0 | 0 | 0 |

GOALS AND ACTUAL NEW CLUBS CUMULATIVE



GOALS AND ACTUAL MEMBERS CUMULATIVE



| | | | |
|------------------------|--|---|-----------------|
| DROPPED CLUBS: 11 | 405 CLUBS OF 728 ADDED 1 OR MORE NEW MEMBERS | <u>GENDER DISTRIBUTION</u> | |
| <u>DROPPED MEMBERS</u> | | MALE | 13,480 (66.37%) |
| DECEASED | 147 | FEMALE | 6,830 (33.63%) |
| CLUB CANCELLED | 70 | CLICK HERE FOR HEALTH ASSESSMENT DATA | |
| OTHER | 1,401 | FAMILY UNIT MEMBERS | 3,415 |
| TOTAL | 1,618 | HEAD OF HOUSEHOLD | 1,630 |
| | | NON-HEAD OF HOUSEHOLD | 1,785 |